

Members And Attenders Prayer List

Mary Bales	Marge Brown
Larry Caldwell	Marilyn Caldwell
Reona Connatser	Mary Coulter
Sarah Coulter	Ruby Crumpton
Kim Dahm (USAF)	Juanita Davis
Pearl DeLozier	Amelia Earnhart
Fran England	Nancy Feezell
Jordan Hackworth (USAF)	Evelyn Headrick
Kenneth Headrick	Mary Lois Hill
Allene Johnson	Daniel Laughter
J.B. Long	Ruth Miller
Dennis Morgan	Donna Pack
C.J. Pierce (US Army)	Ica Pierce
Steve Reagan	Jeremy Sloan
Helen Stone	Helen Sullivan
Jerri Thompkins	Martha Wallace
Military Personnel	

VITAL STATISTICS December 6, 2009

Current Expense 14263.44
 Building Fund..... 860.00
 Building Fund Memorial
 Wells Waters 200.00
 Memorials
 Jerry Walker 160.00
 Lottie Moon 4547.95
 Annie Armstrong 50.00
 Poinsettias 72.00
 Youth..... 50.00
 KIT Club..... 45.00
 Total Deposit 20248.39

ATTENDANCE

Sunday School: 209 Morning Worship: 183
 AM Extended Session: 23 (Includes both services)
 633 Worship Service (Wed. Dec. 2nd): Cancelled

CONTACTS

General Officers: 14	Adult IV: 3
Encouragers: 1	Gleaners: 2
Wisdom Seekers: 31	Happy Helpers: 38
Golden Glow: 5	Friendship: 13
Mingles: 10	Young Adults: 14
3 rd & 4 th Grades: 3	4 & 5 Yr. Olds: 1

Total Contacts: 135

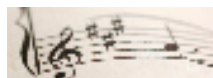


Extended Session Workers



Sunday, December 13th

Early Service: Adam & Tika Buchanan
 Babies/Toddlers: Carol Moore and Virginia Waters
 2s – 5s: Scott & Susan Emert



Special Music

2nd Service

“Christ Is Born” Choir

Both Services

“New Star Shining” Greg & DiAnne Wilson

How To Contact Pleasant Grove

Phone (865) 977-1526 Fax (865) 977-8526
Email: pgbc@pgbctn.org Web Page: www.pgbctn.org

PLEASANT GROVE BAPTIST CHURCH
 3736 TUCKALEECHEE PIKE
 MARYVILLE, TN 37804
 RETURN SERVICE REQUESTED
 NON PROFIT
 US POSTAGE PD
 MARYVILLE, TN
 PERMIT #16

PLEASANT GROVE



BAPTIST CHURCH

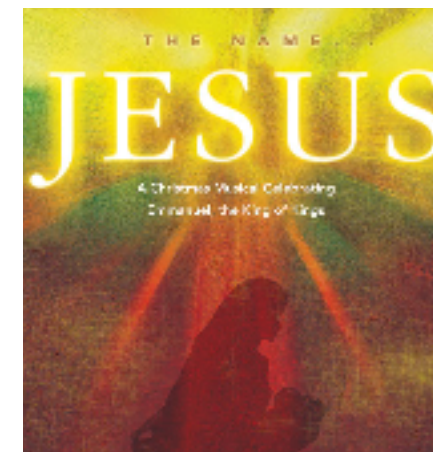
REFLECTIONS

December 9, 2009

MINISTER
 GREG L. LONG

MUSIC MINISTER YOUTH/OUTREACH MINISTER
 GREG WILSON ASHLEY BRAMBLETT

*Adult
 Choir
 Cantata*



Sunday, December 13th
6:00 PM

Lottie Moon Christmas Offering

National Goal: \$175 Million

Church Goal: \$8,700

Received to Date: \$5,380.95

GA MAILBOX

The GA Christmas Mailbox is open for business. Cost is 40¢ per card. All money raised will be given to the Lottie Moon Christmas Offering. Thank you for your continued support to missions and the children's programs.

Operation Food Drive

The WMU is coordinating our annual Operation Food Drive to help the Baptist Center. We are collecting non perishable food items through Sunday, December 20th. Items can be placed in the hallway beside the Sunday School Office.

Salvation Army Bell Ringers

The WMU will be helping the Salvation Army ring bells again this year on Saturday, December 19th at Kroger's (next to Target). We will start at 10:00 a.m. and go until 8:00 p.m. We will ring in one-hour shifts. If anyone is interested, please fill out an "I Wish" card or contact Janice Garner at 599-7655.

Children's Praise

December 13th Sing with the Adult Choir

December 15th Practice 7:00 – 8:00 p.m.

December 16th Christmas with Children's Praise

December 23rd – January 13th Holiday Break

January 20, 2010 Children's Praise begins new year

CHURCH MEETINGS

KIT Club	Wed. Dec. 16 th	11:00 AM
Deacons Meeting	Sun. Dec. 20 th	4:30 PM
Business Meeting	Sun. Dec. 20 th	7:00 PM

CHRISTIAN SYMPATHY

To the family of Kent Roberts, Charlie & Mary Gene Roberts' son

To the family of Ronald McCammon, Sarah Coulter's son

Precious in the sight of the Lord is the death of His saints. PS. 116:15

Many Thanks

I appreciate the prayers, support and visits of the pastor and the church members during my hospital stay. God's blessings to all.

Joe and Bonnie Sharp

Dear Pleasant Grove Church Family,
Our family has been overwhelmed by the untold support we have received from December 4, 2008 through the loss of Kent on December 2, 2009. In every gesture of caring we feel your Christian love and support.

Thank You

Charlie & Mary Gene Roberts and family

Homebound Member Of The Week

Dec 6-12

Martha Wallace

Christmas Eve Service

We will dismiss our Wednesday 633 service on December 23rd. We hope you can join us for our Christmas Eve Lord's Supper Service at 3:00 p.m. Thursday, December 24th.

End Of Year Giving

According to the IRS regulations, contributions must be received in the church or postmarked by December 31, 2009.

2010 Offering Envelopes

The boxes of 2010 envelopes will be available for pick up Sunday morning, December 13th. Please do not use these until 2010 as you may not have the same number.

Youth Information

Progressive Dinner Saturday, December 12th

If you would be interested in opening your home to the youth group and providing one of the following: appetizers, salads, entrees, or desserts please contact Ash at 977-1526.

Lock-in Wednesday, December 30th

The youth group has been invited to participate in a lock-in with several area churches. But to do this we will need a number of chaperones. There will be two shifts. A 7:00 p.m. to 3:30 a.m. shift and a 3:30 to 8:30 a.m. shift. The youth have been begging for a lock-in for years, but we can only do one if we have enough chaperones. If you would be willing to chaperone one or both shifts please contact Ash at 977-1526.

Caroling

Tony Abbott's class will be hosting a Church wide Christmas Caroling on Sunday afternoon December 20th starting around 5:00 p.m. We will select several homebound families to visit. There will be refreshments following in the Fellowship Hall.

KIT CLUB

December KIT Club meeting will be December 16th with special guests "The Bent Strings" which includes our own Wayne Edmonson. Other members are Anita Brown, Bonnie Sugg, Hugh Brown and Bill Robinson Sr. We will be singing Christmas carols and enjoying fellowship during this festive season. Remember to bring your favorite dish, friendly smile, singing voice and invite a friend to join us. Music begins at 11:00 a.m. and lunch will be served at noon.

Security Volunteers

For Sunday December 13th

1st Service Brent Bustin & Doyle Sloan
Sunday School Jeff Ledford & Jonathan Long
2nd Service Jonathan Long & Robert Galyon